

## Thank You for Downloading!

Thank you for downloading the Banker Wire texture pack to use with your rendering software.

Included in this package are repeatable pattern photos of our wire mesh to be used in your designs. Transparency files are also included with each sample if the pattern allows.

Product Details:

**S-12**

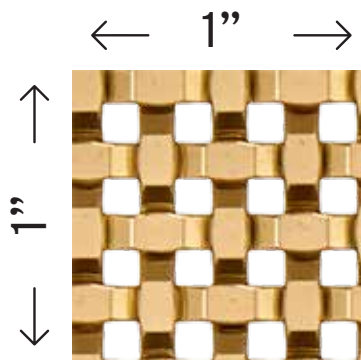
Product URL: [bankerwire.com/products/s-12](http://bankerwire.com/products/s-12)

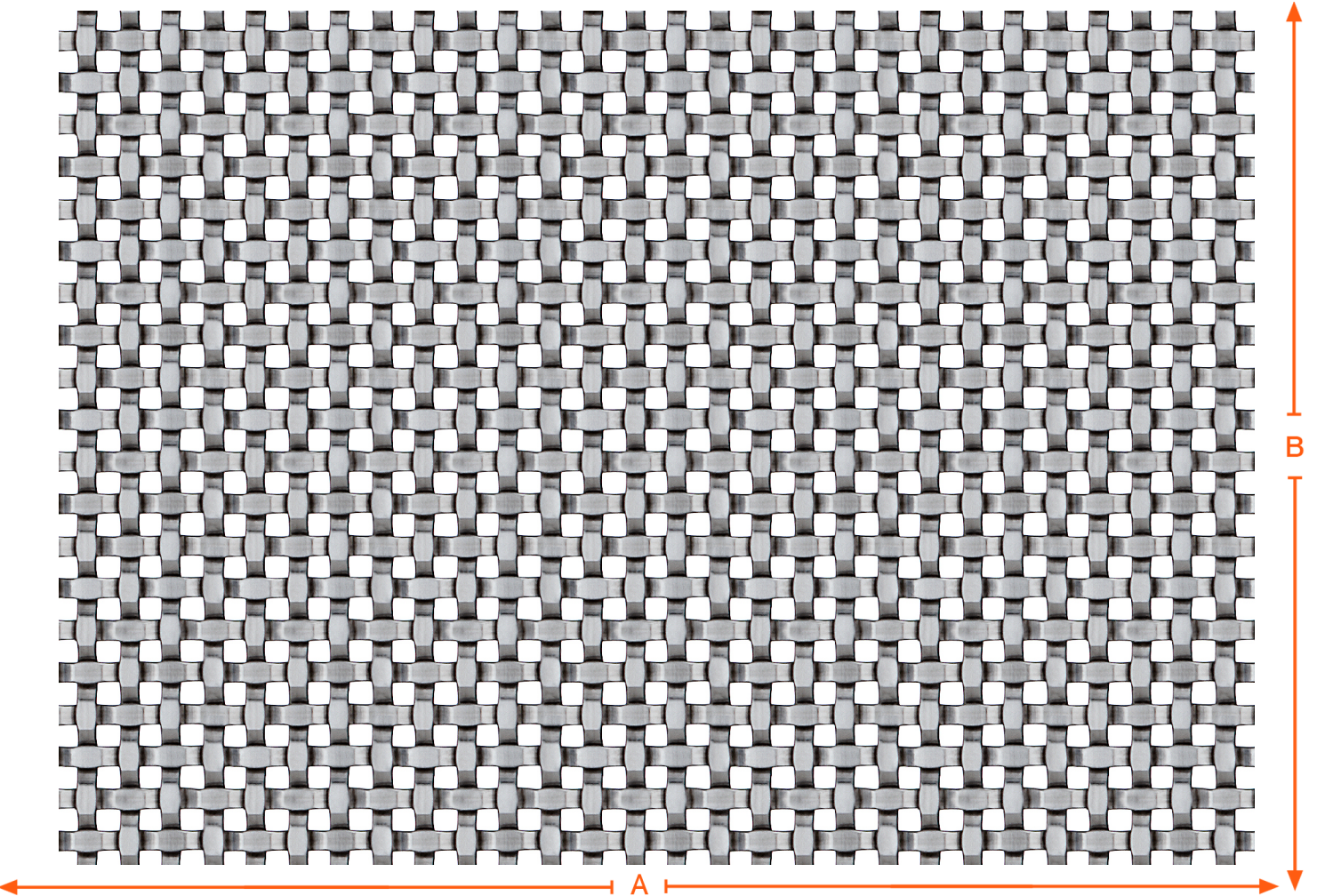
## SOFTWARE INFORMATION

**Repeatable Texture File Dimentions**  
(for accuracy of rendering)

Width: 1 in

Height: 1 in





PATTERN DETAILS

PERCENT OPEN:  
21.6%

ASPECT RATIO:  
1.00:1

WEIGHT:  
2.28 lbs./sq. ft.

OVERALL THICKNESS:  
0.105

CRIMP STYLE:  
E1E1

OPENING LIMITATION:  
0.150 in.

WHAT ARE YOUR DIMENSIONS?

We manufacture every job to size. List the dimensions and any addition details of your job.

QTY	DIM. A	DIM. B	NOTES

Please double check that your sizes and materials are within our Maximum Dimensions below.

"MAXIMUM" DIMENSIONS OF AVAILABLE RAW MATERIAL CONFIGURATIONS

Max. A	Max. B	Raw Material Configuration
120	60	SS PL WS

Notes

\*Weight based on the specific density of mild (plain) steel \*\*Maximum sphere diameter which will pass through opening Product specifications are subject to change. Product image is shown at 100% unless stated otherwise. For accuracy, specification sheet must be printed with no scaling. Measurements and data are approximate and should be confirmed with a physical sample.