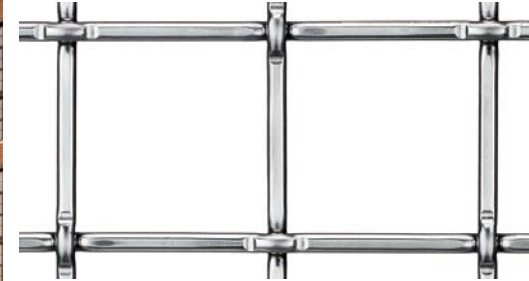


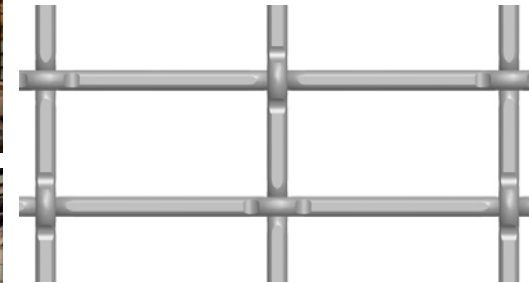
## AVA NoMa

Balcony Railing and Pet Park Enclosure  
Washington, DC, USA

L-62

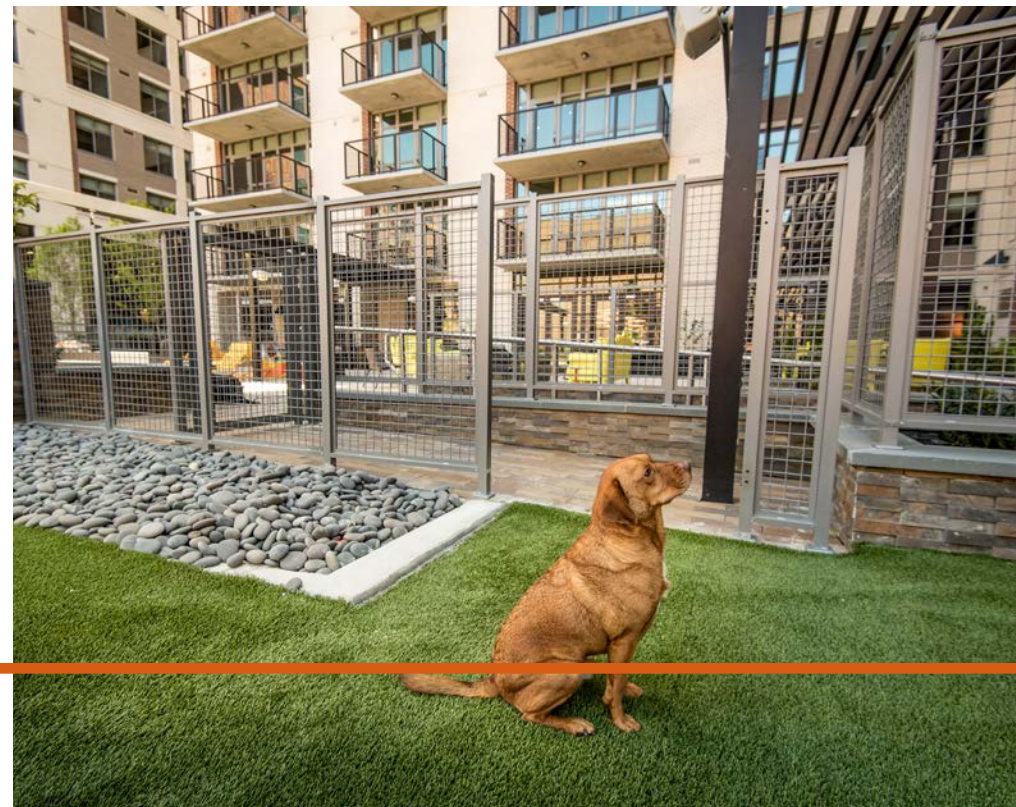
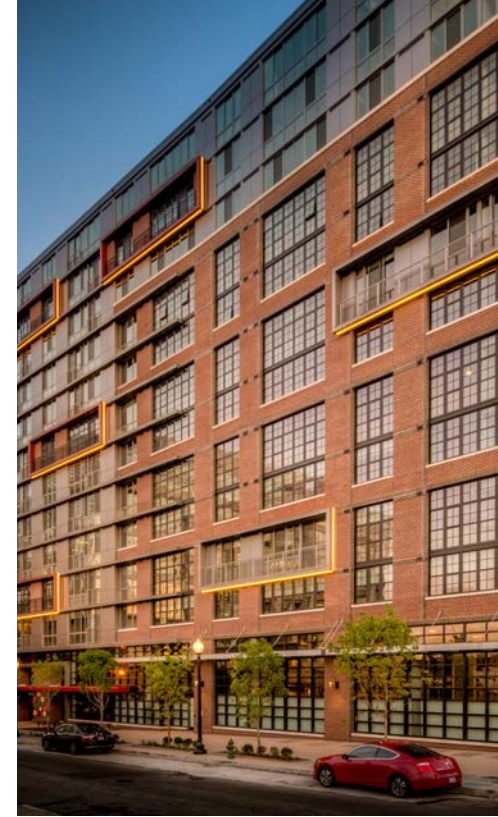


LZ-11



The design of AVA NoMa—a 13-story, urban infill high rise residential building—nods to Washington, D.C. NoMa neighborhood's industrial past while embodying a 'refined industrial' aesthetic that is inherently modern. To help realize this design vision, KTG Architecture + Planning specified Banker Wire's L-62 and LZ-11 woven wire mesh—patterns that have roots in the industrial world, yet lend themselves well to architectural applications as a result of Banker Wire's precise, high-definition lock crimp manufacturing capabilities.

Banker Wire's woven wire mesh was utilized throughout 20,600 square feet of indoor and outdoor amenity spaces, including in the fabrication of residential balconies, and as fencing and partitioning in many public areas, such as the WAG Pet Park and the landscaped residential courtyard.



**BANKER** 