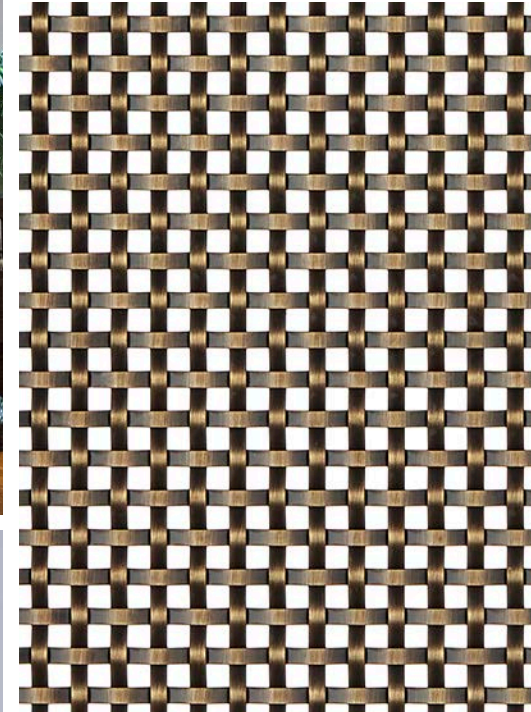


SYDNEY RESIDENCE

Rangehood Cladding/Millwork
Sydney, Australia

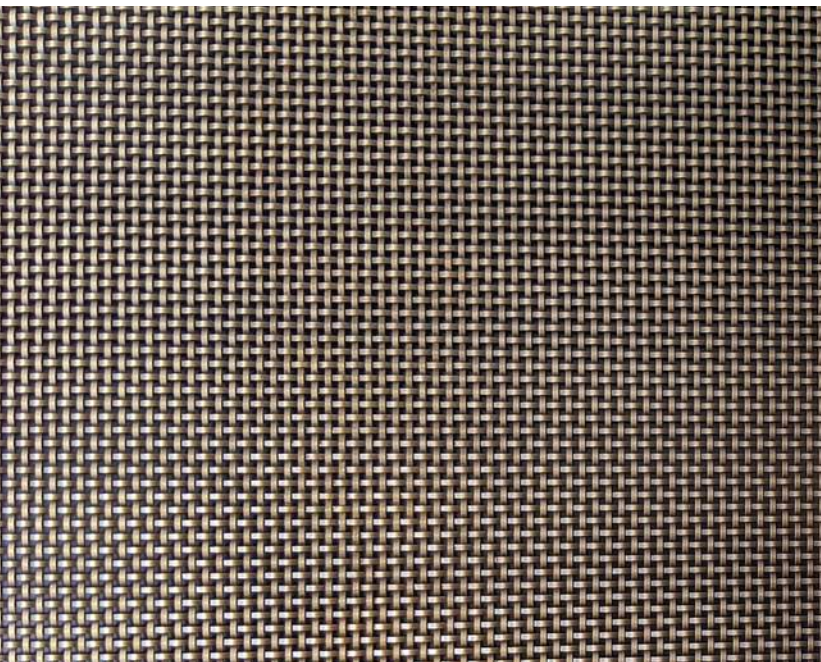
S-32

*Shown below in Antique Brass
Decorative Plating*



This private residence located in Sydney, Australia, utilized Banker Wire's S-32 woven wire mesh for a stunning covering on a modern rangehood. S-32 was woven in plain steel and then plated in Antique Brass, the framing was supplied by the fabricator and electroplated with an aged copper finish. The wire mesh was laser cut to size and attached to the substrate using small bronze nails.

S-32 is a small scale, flat wire woven wire mesh pattern that is simplistic, yet beautiful. The shape of the wires and pattern they form are reminiscent of basket style mesh. The low percent open area of S-32 creates a mock-opaque look when used as cladding.



BANKER 