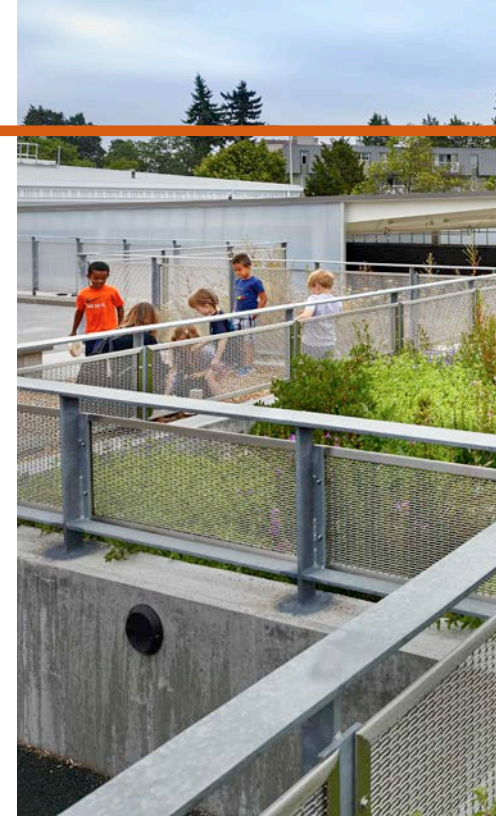
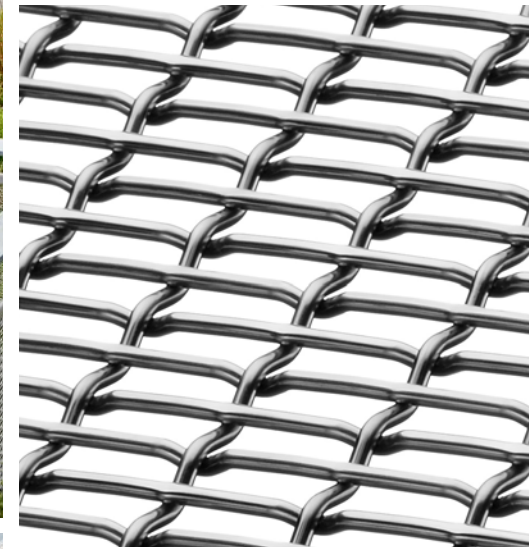


HAZEL WOLF K-8 STEM SCHOOL

Interior/Exterior Railing Infill
Seattle, Washington USA

FPZ-10



Hazel Wolf K-8 STEM School is a "Choice School" in the Seattle area. The school puts an emphasis on environmental science and the design of the building underscores the core education goals of the program. The innovative curriculum uses the environment around the students as a lens to focus their studies on E-STEM (Environmental, Science, Technology, Engineering, and Mathematics) subjects. The new 78,000 square foot school is built on a 3.2 acre site that functions as indoor and outdoor learning labs.

Throughout the school and grounds, Banker Wire's FPZ-10 mid-fill wire mesh pattern is used as railing infill. As a strong and simple pattern, FPZ-10 is as functional as it is beautiful. The simplicity of the pattern blends in with its surrounding environment, further enhanced by the mesh's perceived transparency allowing nearly uninterrupted sight lines and light. FPZ-10 offers safety and security to the students of Hazel Wolf while limiting distraction from the learning environment.

BANKER WIRE

600 PERKINS DRIVE | MUKWONAGO WI 53149 USA