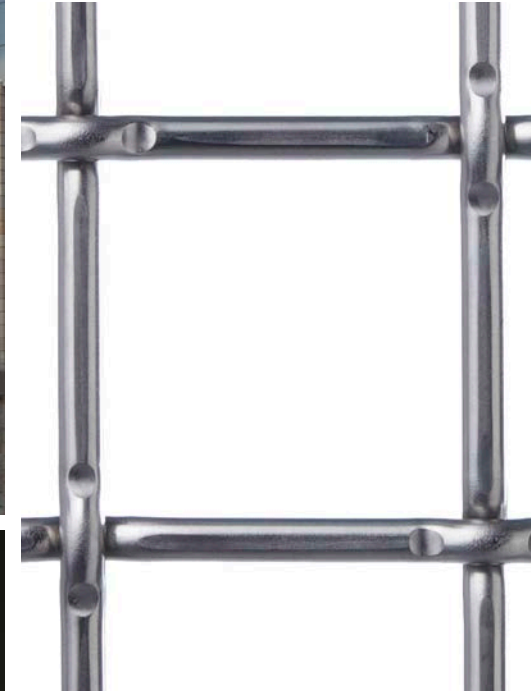


THE LYRIC AT CARLETON PLACE

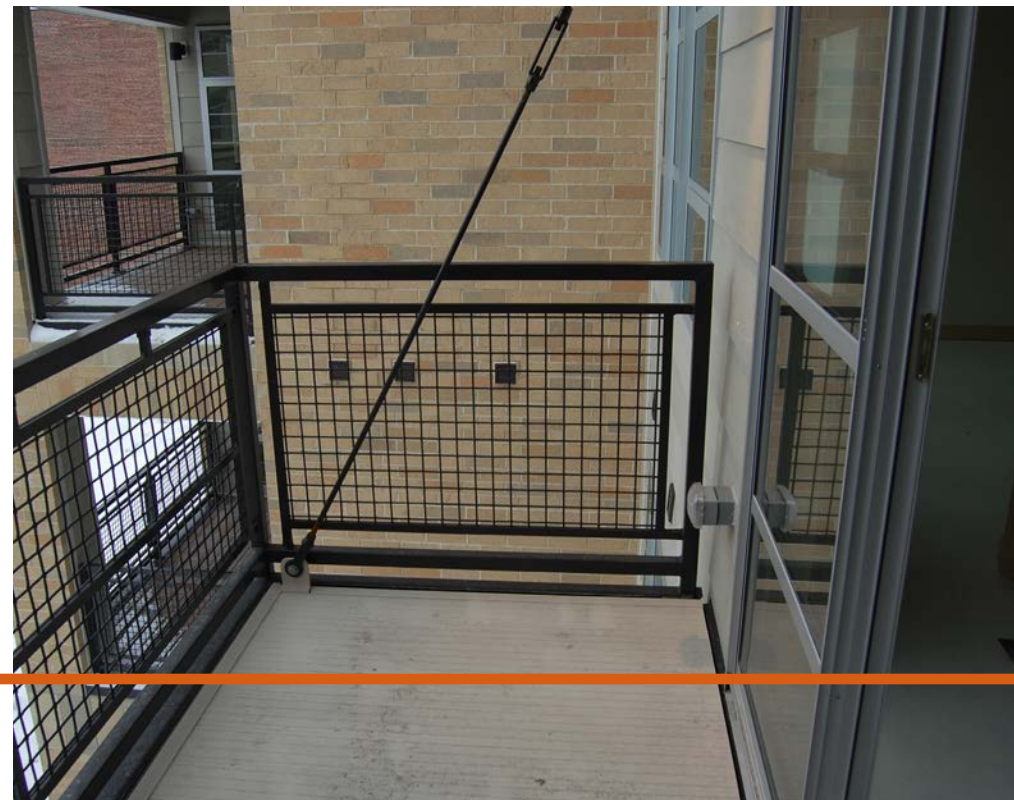
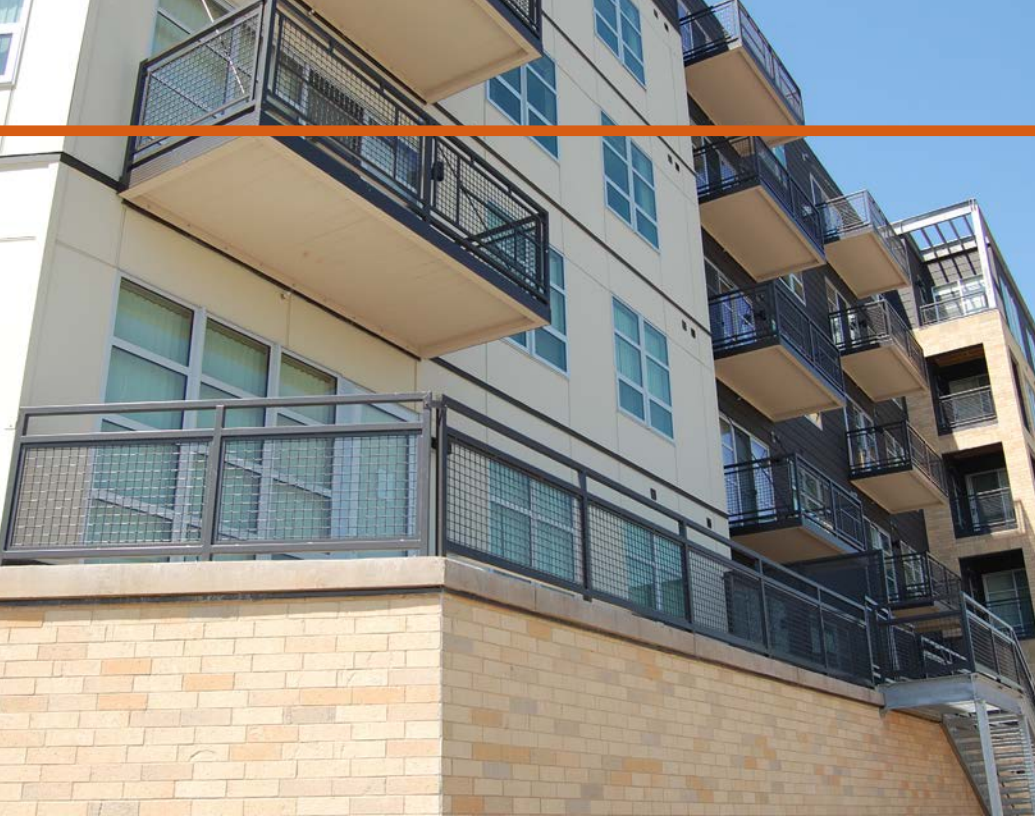
Application Description
St. Paul, Minnesota USA

L-64



Aluminum woven wire mesh is often used for balcony railings because of its long lasting corrosion resistance characteristics and durability, and most common because of its strength. Panels of Banker Wire aluminum mesh with 2" spacing from heavy .250" diameter wire were made for balcony and stair railings at The Lyric at Carleton Place, luxury apartment homes, the newest addition to Carleton Place, an urban residential complex of two connecting buildings The Lyric and Carleton Place Artist Lofts, apartments for working artists in an historic building. The clean and economical frame system design used for this project was provided by Classic Industries.

Powder coating the mesh and frame can add an unlimited range of color to your next railing project.



BANKER WIRE

600 PERKINS DRIVE | MUKWONAGO WI 53149 USA